

SAMPLE COLLECTION:

# MENINGEAL SWAB

## CONSIDERATIONS:

- Consult with a diagnostician on appropriate swab and transport media.
- If samples are tested by PCR, do not use swabs with agar.
- Preferred euthanasia methods are electrocution, euthanasia solution, and CO<sub>2</sub>.
- Before performing a full necropsy, collect the meningeal swab first.
- Use personal protective equipment.
- Use sterile supplies to avoid sample contamination.
- Label samples with permanent marker.

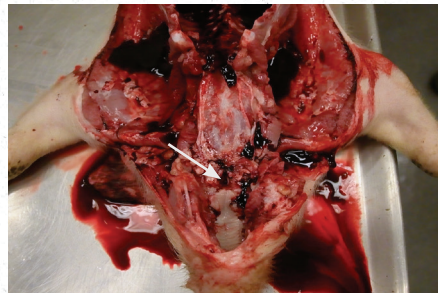
## SUPPLIES:

- Knives
- Sterile swab
- Sampling tube
- Cooler and icepacks
- Submission form
- Permanent marker

## INSTRUCTIONS:



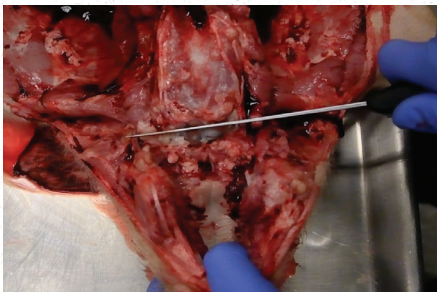
**1.** Place the pig on its back (dorsal recumbency).



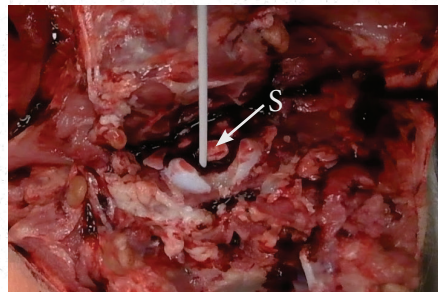
**2.** Remove tissue, tongue, trachea, and esophagus from jaw to chest, exposing the cervical spine.



**3.** Flex the head up and down to identify the "yes" joint (atlanto-occipital joint).



**4.** With a clean knife, make an incision in the middle of the joint to expose the spinal cord, occipital condyles and meninges. Do not touch this area to avoid contamination.



**5.** Place the sterile swab into the space around the spinal cord (S) and slightly into the skull and swirl.



**6.** Place the swab into a labeled, sterile tube. Promptly refrigerate samples for shipment and submit to a veterinary diagnostic laboratory.